

Bioflex Ultra Sanitary Triclamp (Triclover) Fittings

PTFE Lined, Flared and Hot Formed

Introduction

Advantages are - unrestricted clean flow of fluids, no fluid entrapment areas, and all PTFE wetted surfaces internally. Available as standard, stocked fittings in the listed sizes, or in other sizes to special order

End Fitting Specifications

- ASME BPE
- DIN32676
- BS4825 Pt 3 - equivalent to ASME BPE
- ISO 1127

Note: The inside lip of the Aflex flared face design is hot formed to a square edge. This prevents a gap for fluid entrapment between the rubber seal and the sealing face. Other suppliers designs have rounded edges, which opens a gap for fluid entrapment.

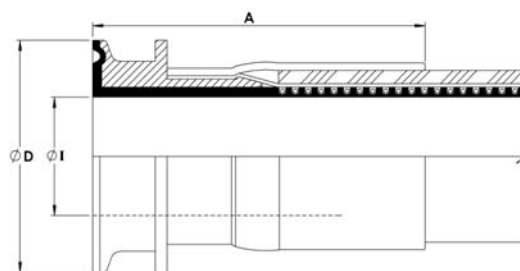


End Fitting Materials

- Fittings in Grade 316L SS (= BS 316 S11 = EN 1.4404)
- Ferrules, most in Grade 304 SS, some sizes in Grade 316L SS

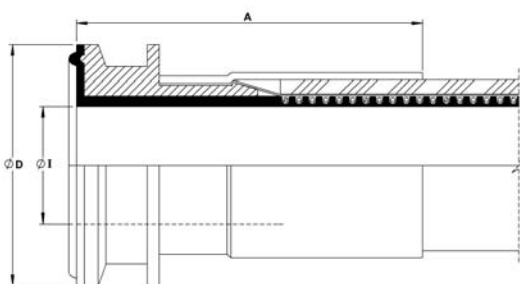
Temperature and Pressure Ratings

- Pressures up to 16 Bar (230 psi)
- Temperatures upto 120°C (250°F) with EPDM Gaskets
- Temperatures up to 180°C (356°F) with PTFE, Silicone or Viton Gaskets
- Higher Pressures & Temperatures possible with Special Clamps and appropriate Seals.



'Beaded' Triclover Fittings

This fitting design is available to special order. No separate seal is required for this design, eliminating any seal compatibility problems.



Mini-Sanitary Triclamp Fittings	Nominal Hose Size	Flange Diameter D		Outlet Diameter I		Fitting Length A	
	in	in	mm	in	mm	in	mm
	3/8	0.984	25.0	3/8	9.5	2.2	56
	1/2	0.984	25.0	3/8	9.5	2.3	60
Sanitary Triclamp Fittings	5/8 (DN15)	1.340	34.0	5/8	15.86	3.0	77
	3/4 (DN20)	1.340	34.0	0.790	20.0	3.0	77
	3/4	1.984	50.5	3/4	19.0	2.6	65
	7/8	1.984	50.5	7/8	22.2	2.6	65
	1	1.984	50.5	1.024	26.0	2.6	65
	1 3/8	1.984	50.5	1 3/8	34.9	2.8	72
	1 1/2	1.984	50.5	1 3/8	34.9	3.2	80
	1 7/8	2.516	64.0	1 7/8	47.6	3.3	84
2	2.516	64.0	1 7/8	47.6	3.6	91	

*Fitting Lengths listed are for Bioflex Ultra RC, SI and BK hose grades. Shorter lengths apply for other hose grades.

Note: The 7/8", 1 3/8" and 1 7/8" hose sizes can only be supplied as assemblies with lined Sanitary Triclover (or I-Line fittings) at BOTH ends, because other types of fittings (Flange, Camlocks etc) are not available for these sizes of hose.